

LOADING ARMS

**BUILT TO PERFORM.
BUILT TO LAST.**

Engineered loading arm solutions for safe, efficient and reliable transfer of liquids, gases and vapours.

PROFLOW
SAFE. SECURE.
RELIABLE.

PRODUCT
CATALOGUE

2026



Land Loading Arms

Land loading arms are designed to transfer fluids between piping systems and tankers. With features consisting of user-friendly and easy-to-operate, Proflow land loading arms have been used in various of job sites.

Function :	To transfer liquid or gas between loading platform and tank truck or railcar tank.
Applicable Tank:	Applicable for both top and bottom tanks.
Applicable Products :	Oil products, petrochemicals, LNG and other fluids.
Balance Mode:	Spring cylinder, gas spring, pneumatic cylinder or counterweight, for easy operation.
Operating Method:	Manual, Pneumatic or Hydraulic
Pipeline Material :	CS, SS, Aluminum, Alloy, FRP, Steel lined with PTFE, etc
Nominal Diameter :	DN25 ~ DN200 (1" ~ 8")
Design Temp. :	-196℃ ~ 250℃
Design Pressure :	-0.06MPa ~ 5.0MPa



GLOBAL PRESENCE

Supplying engineered solutions to clients in over 40 countries worldwide



Unit D , 300 Elgin Street , Pomona Precinct , Pomona AH, JHB, South Africa



+27 11 627 2501



info@apgindustrial.co.za



www.apgindustrial.co.za



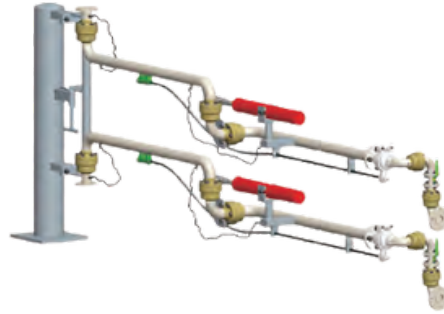


Typical Structures

Top Loading Arms



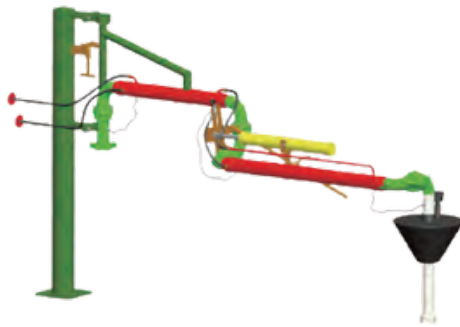
Single Liquid Line



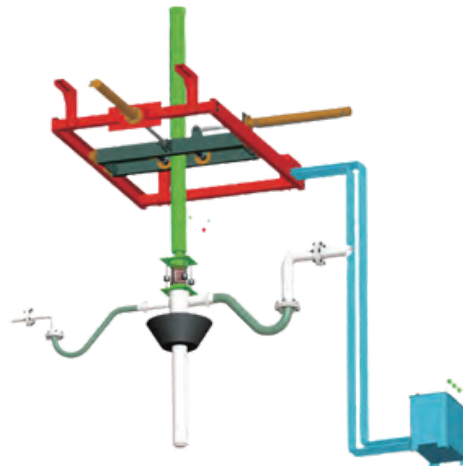
With Vapour Line



With vap or line and sealing cap



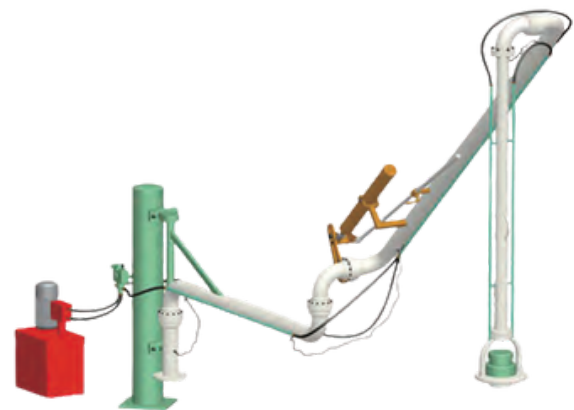
With sealing cone and heat tracing



Trusswork Type



Lined with PTFE



With Submersible Pump

GLOBAL PRESENCE

Supplying engineered solutions to clients in over 40 countries worldwide



Unit D , 300 Elgin Street , Pomona Precinct , Pomona AH, JHB, South Africa



+ 27 11 627 2501



info@apgindustrial.co.za



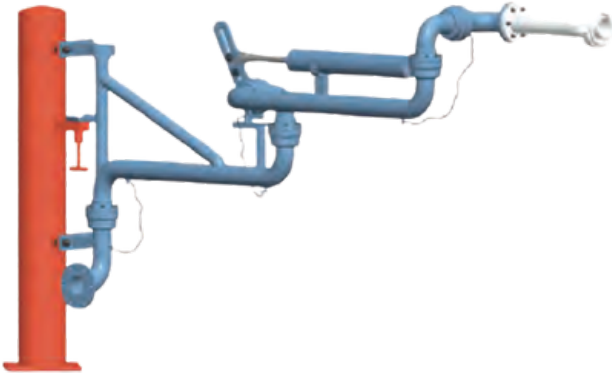
www.apgindustrial.co.za



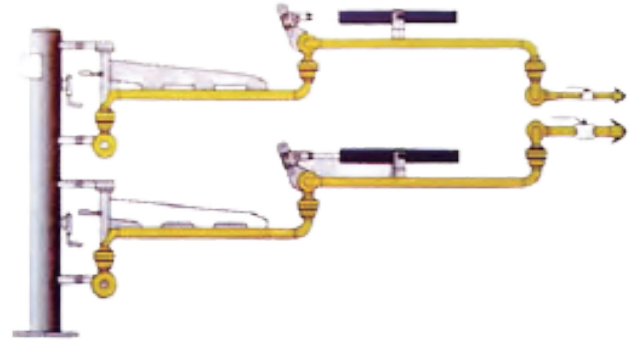


Typical Structures

Bottom Loading Arms



Single Liquid Line



With vapor line and quick coupler



Bottom loading arm with API coupler

GLOBAL PRESENCE

Supplying engineered solutions to clients in over 40 countries worldwide



Unit D , 300 Elgin Street , Pomona Precinct , Pomona AH, JHB, South Africa



+ 27 11 627 2501



info@apgindustrial.co.za



www.apgindustrial.co.za





Automatic Loading Arm

Through pneumatic control systems, automatic alignment systems, intelligent gateway and cloud platform systems, automatic land loading arms can realise the automatic loading operation, greatly reduce the labor intensity of site operators, improve work efficiency and eliminate safety risks.

• Operation Method

- Local operation panel
- Wireless pendent or Mobile App
- Central control room

• Main Features

- Automatic alignment:

After the sensor on the loading arm captures the position of the manhole of the tanker, the position information will be transmitted to the central control room in real time. The operator in the control room can automatically control the movement of the loading arm through the solenoid valves, and complete the loading operation by adjusting the three-dimensional motion.

- Intelligent gateway and cloud platform:

To upload the real-time running status and information to the cloud service platform by using the Internet.

- Equipment maintenance personnel, safety management personnel, etc. can maintain and ensure the safe operation of equipment online in real time.



GLOBAL PRESENCE

Supplying engineered solutions to clients in over 40 countries worldwide



Unit D , 300 Elgin Street , Pomona Precinct , Pomona AH, JHB, South Africa



+ 27 11 627 2501



info@apgindustrial.co.za



www.apgindustrial.co.za





LNG/Cryogenic Truck Loading Arm



• Main Data

Applicable Product: Cryogenic Ethylene, LNG, etc.
Nominal Diameter: DN50 DN100
Pipeline Material: 304L or 316L
Design Temperature: -196 100°C
Design Pressure: -0.06 2.0MPa

• Main Technial Characteristics

- Cryogenic components are all treated with liquid nitrogen to ensure the performance at cryogenic temperatures.
- The cryogenic joints all adopt no lubrication structure and use nitrogen purge raceway to keep the inside dry. It has both a main seal and secondary seal to ensure no leakage. The surface is machined by precise CNC machines to ensure the dimensional accuracy, and is precisely assembled to ensure smooth operation.
- Seals can be changed without dismantling the swivel joint.
- Hydrostatic, air-tightness, cryogenic tests and cold springs are strictly performed in the factory before delivery to ensure the quality.



GLOBAL PRESENCE

Supplying engineered solutions to clients in over 40 countries worldwide



Unit D , 300 Elgin Street , Pomona Precinct , Pomona AH, JHB, South Africa



+ 27 11 627 2501



info@apgindustrial.co.za



www.apgindustrial.co.za





Design Data Sheet for Land Loading Arm

• Top Loading Arm

1	For	<input type="checkbox"/> Truck <input type="checkbox"/> Train	17	Heating	<input type="checkbox"/> No <input type="checkbox"/> Yes
2	Usage	<input type="checkbox"/> Loading <input type="checkbox"/> Unloading			<input type="checkbox"/> Electrical <input type="checkbox"/> Jacket
3	Operation	<input type="checkbox"/> Manual <input type="checkbox"/> Pneumatic <input type="checkbox"/> Hydraulic	18	Nozzle Location	<input type="checkbox"/> Top side <input type="checkbox"/> Bottom side
4	Model		19	Stored Position (to Folling Stair)	<input type="checkbox"/> Left-handed (<input type="checkbox"/> 0°/ <input type="checkbox"/> 45°)
5	Q'ty				<input type="checkbox"/> Right-handed (<input type="checkbox"/> 0°/ <input type="checkbox"/> 45°)
6	Product Loaded		20	Standpost	<input type="checkbox"/> Yes
7	Working Temp.	°C			<input type="checkbox"/> No
8	Design Temp.	°C	21	Base Plate	<input type="checkbox"/> Standard
9	Working Pressure	MPa			<input type="checkbox"/> Other
10	Design Pressure	MPa	22	Platform Type	<input type="checkbox"/> Steel
11	DN (Liquid arm)	mm			<input type="checkbox"/> Concret
12	DN (Vapor arm)	mm	23	Platform Height (H)	mm
13	Pipeline material	<input type="checkbox"/> CS	24	Platform Rail Height (K)	mm
		<input type="checkbox"/> 304	25	Roof Height	mm
		<input type="checkbox"/> 316L	26	Inboard Arm Length (A)	mm
		<input type="checkbox"/> CS lined with PTFE	27	Outboard Arm Length (B)	mm
		<input type="checkbox"/> Others	28	Drop Pipe Length (C)	mm
14	Inlet flange code	<input type="checkbox"/> HG/T20592	29	Standpost center to platform edge (E)	mm
		<input type="checkbox"/> HG/T20615	30	Standpost center to tanker center (W)	mm
		<input type="checkbox"/> EN	31	Inlet flange to platform (F)	mm
		<input type="checkbox"/> ANSI	32	Min height of tanker manifold (H2)	mm
		<input type="checkbox"/> Others	33	Max height of tanker manifold (H1)	mm
15	Tanker Nozzle	<input type="checkbox"/> Open	34	Min inner diameter of tanker manhole	mm
		<input type="checkbox"/> Flange	35	Max inner diameter of tanker manhole	mm
		<input type="checkbox"/> Quick Coupler	Max operating range		
		<input type="checkbox"/> Sealing Cone	36	Range vertical to tanker (X)	mm
		<input type="checkbox"/> Others	37	Range parallel to tanker (Y)	mm
16	Paint Color		Others please specify:		

1	<input type="checkbox"/> Automatic Quantitative Loading System	6	<input type="checkbox"/> Outboard arm mechanical locking device
2	<input type="checkbox"/> Level Alarm System	7	<input type="checkbox"/> Outboard arm pneumatic locking device
3	<input type="checkbox"/> Grounding System	8	<input type="checkbox"/> Operating Platform
4	<input type="checkbox"/> Submersible Pump	9	<input type="checkbox"/> Folding Stair
5	<input type="checkbox"/> Telescopic Drop Pipe	10	<input type="checkbox"/> Drip Bucket

GLOBAL PRESENCE

Supplying engineered solutions to clients in over 40 countries worldwide



Unit D , 300 Elgin Street , Pomona Precinct , Pomona AH, JHB, South Africa



+ 27 11 627 2501

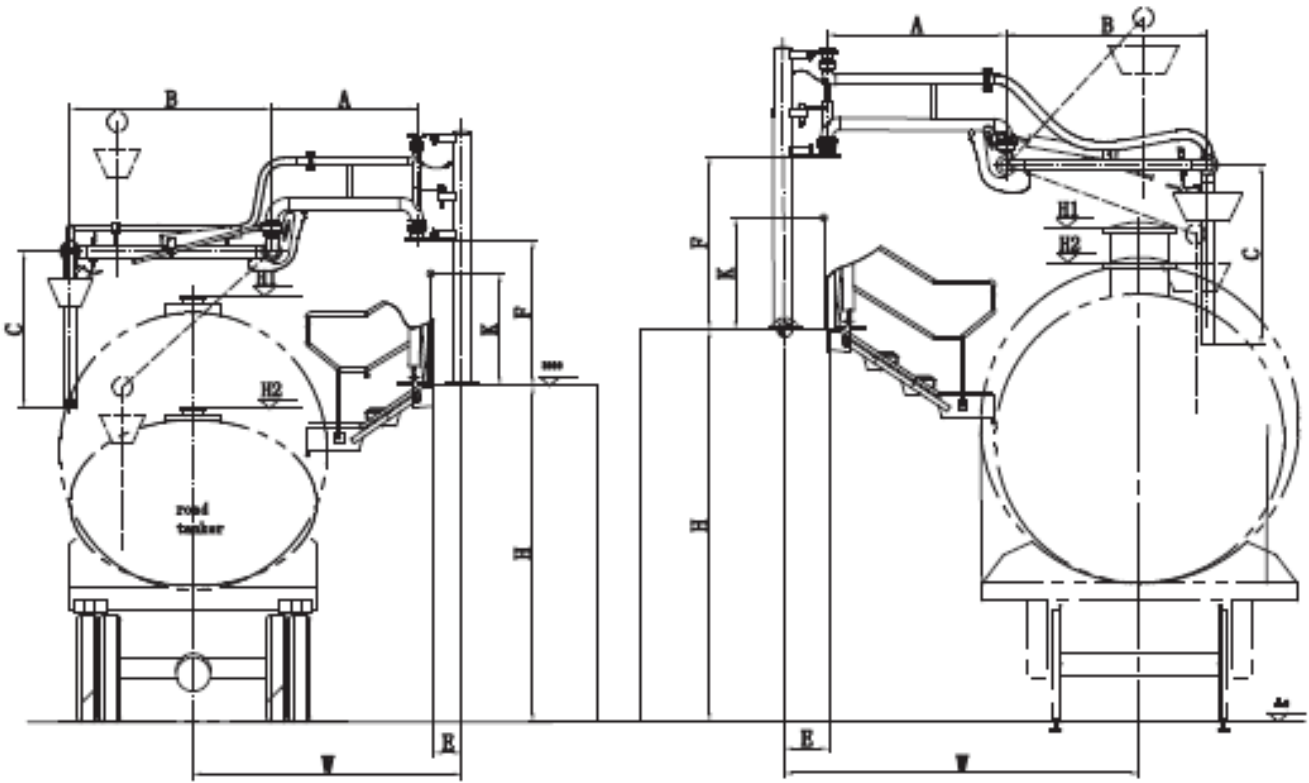


info@apgindustrial.co.za



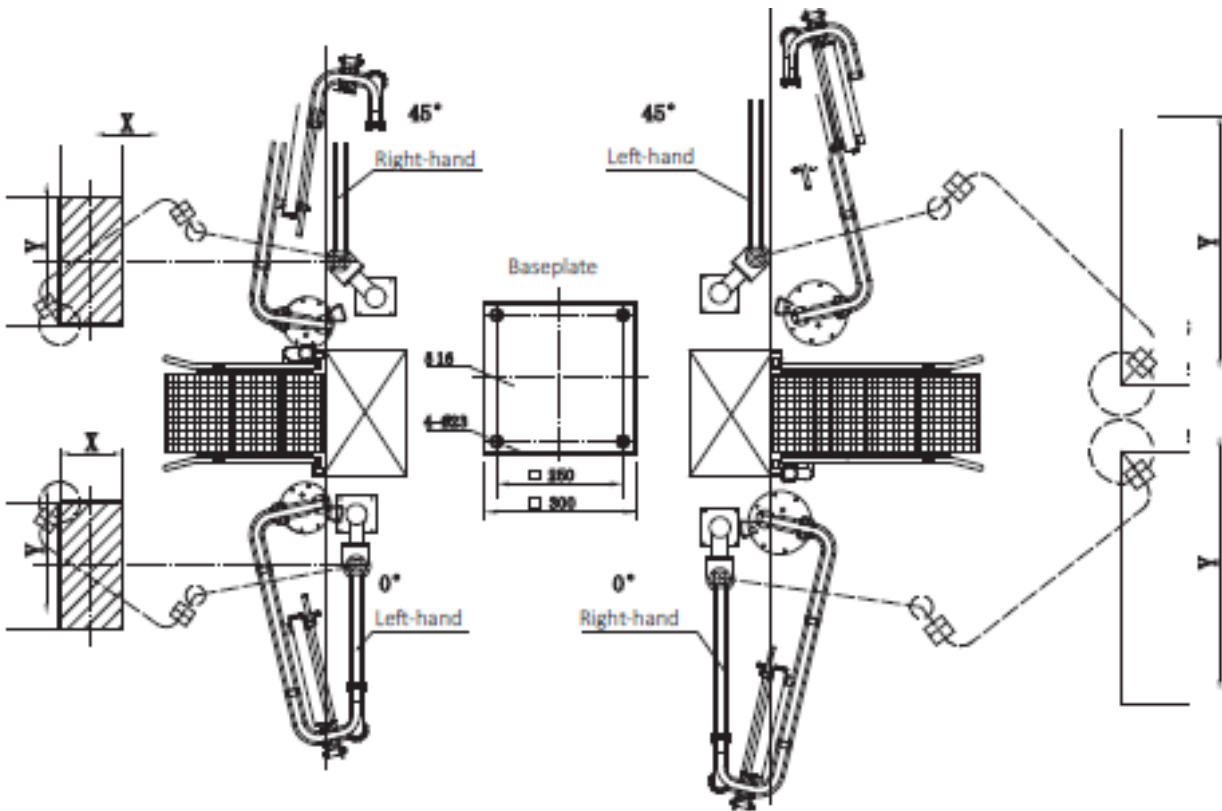
www.apgindustrial.co.za





Working position for road tankers

Working position for railcar tankers



Stored position for road tankers

Stored position for railcar tankers

GLOBAL PRESENCE

Supplying engineered solutions to clients in over 40 countries worldwide



Unit D , 300 Elgin Street , Pomona Precinct , Pomona AH, JHB, South Africa



+27 11 627 2501



info@apgindustrial.co.za



www.apgindustrial.co.za





Design Data Sheet for Bottom Loading Arm

1	For	<input type="checkbox"/> Truck <input type="checkbox"/> Train	16	Paint Color	<input type="checkbox"/> Silver Gray
2	Usage	<input type="checkbox"/> Loading <input type="checkbox"/> Unloading			<input type="checkbox"/> Others
3	Model		17	Heat Tracing	<input type="checkbox"/> Electric <input type="checkbox"/> Jacket <input type="checkbox"/> Insulation
4	Q'ty		18	Inlet Nozzle Location	<input type="checkbox"/> Side <input type="checkbox"/> Rear <input type="checkbox"/> Others
5	Product Loaded		19	Stored Position	<input type="checkbox"/> Left-handed
6	Working Temp.	°C			<input type="checkbox"/> Right-handed
7	Design Temp.	°C	20	Standpost	<input type="checkbox"/> Yes
8	Working Pressure	MPa			<input type="checkbox"/> No
9	Design Pressure	MPa	21	Base Plate	<input type="checkbox"/> Standard
10	DN (Liquid Line)	mm			<input type="checkbox"/> Others
11	DN (Vapor Line)	mm	22	Standpost center to platform edge (E)	mm
12	Pipeline Material	<input type="checkbox"/> CS	23	Standpost center to tanker center (W)	mm
		<input type="checkbox"/> 304	24	Loading bay height (H)	mm
		<input type="checkbox"/> 316L	25	Max height of tanker manifold (H1)	mm
		<input type="checkbox"/> Lined with PTFE	26	Min height of tanker manifold (H2)	mm
		<input type="checkbox"/> Others	27	Liquid flange center to base (H3)	mm
13	Site Flange Code	<input type="checkbox"/> HG/T20592	28	Vapor flange center to base (H4)	mm
		<input type="checkbox"/> HG/T20615	29	Vapor inboard arm length (A1)	mm
		<input type="checkbox"/> SH/T3406	30	Vapor outboard arm length (B1)	mm
		<input type="checkbox"/> ANSI <input type="checkbox"/> Others	31	Vapor drop pipe length (C1)	mm
14	Tanker Connection	<input type="checkbox"/> Flange	32	Liquid inboard arm length (A2)	mm
		<input type="checkbox"/> Quick Coupler	33	Liquid outboard arm length (B2)	mm
		<input type="checkbox"/> Dry Coupler	34	Liquid drop pipe length (C2)	mm
		<input type="checkbox"/> Others	35	Range perpendicular to tanker (X)	mm
15	Tanker Flange Code	<input type="checkbox"/> HG/T20592	36	Range parallel to tanker (Y)	mm
		<input type="checkbox"/> HG/T20615	Other Requirements please specify:		
		<input type="checkbox"/> Others			

Optional Accessories

1	<input type="checkbox"/> Automatic Quantitative Loading System	5	<input type="checkbox"/> Break-away Coupler
2	<input type="checkbox"/> Drop Pipe Gas Spring	6	<input type="checkbox"/> Manual Valve
3	<input type="checkbox"/> Drop Pipe 4-link Balance System	7	<input type="checkbox"/> Purging Line
4	<input type="checkbox"/> Grounding Device	8	<input type="checkbox"/> Drain Valve

GLOBAL PRESENCE

Supplying engineered solutions to clients in over 40 countries worldwide



Unit D , 300 Elgin Street , Pomona Precinct , Pomona AH, JHB, South Africa



+ 27 11 627 2501



info@apgindustrial.co.za

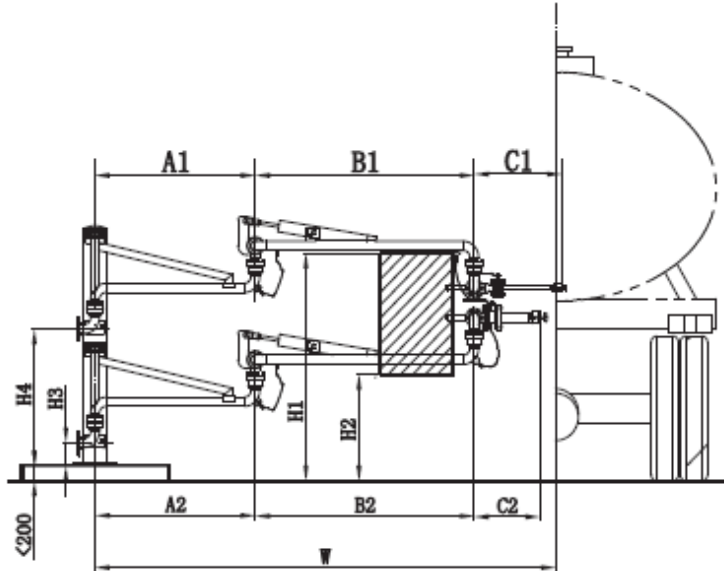


www.apgindustrial.co.za



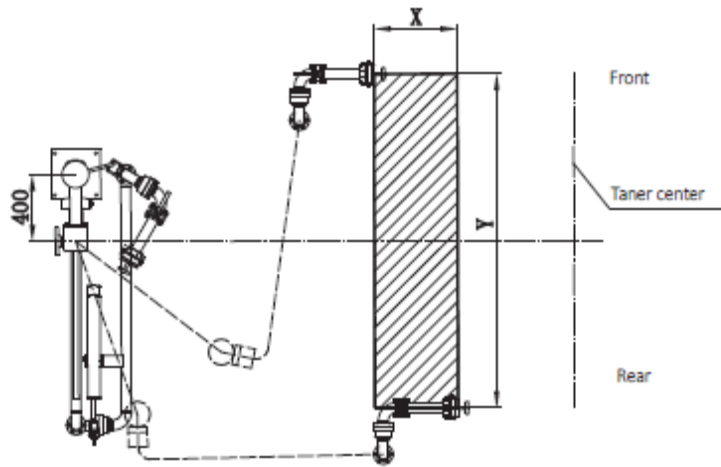


Operating Envelope For Bottom Loading Arm

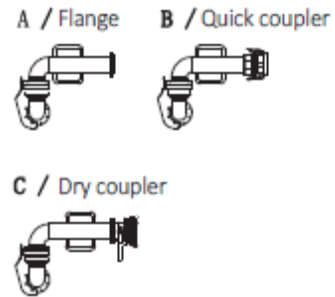


Code		Standard Value
W	Standpost center to tanker center	3500
H1	Max manifold height of tanker	1500
H2	Min manifold height for tanker	700
H3	Height of liquid flange centre	150/200
H4	Height of vapor flange center	900/1100
A1	Vapor inboard length	1100
B1	Vapor outboard length	1500
C1	vapor drop pipe length	600
A2	Liquid inboard length	1100
B2	Liquid outboard length	1500
C2	Liquid drop pipe length	450/600

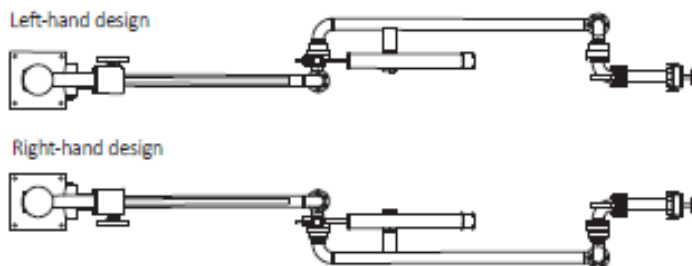
Working position for right hand designs



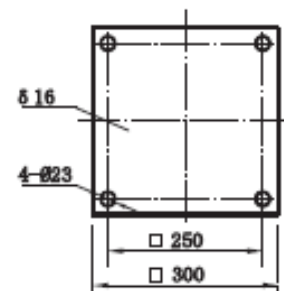
Manifold Types



Position for right hand designs



Baseplate



GLOBAL PRESENCE

Supplying engineered solutions to clients in over 40 countries worldwide



Unit D , 300 Elgin Street , Pomona Precinct , Pomona AH, JHB, South Africa



+ 27 11 627 2501



info@apgindustrial.co.za



www.apgindustrial.co.za





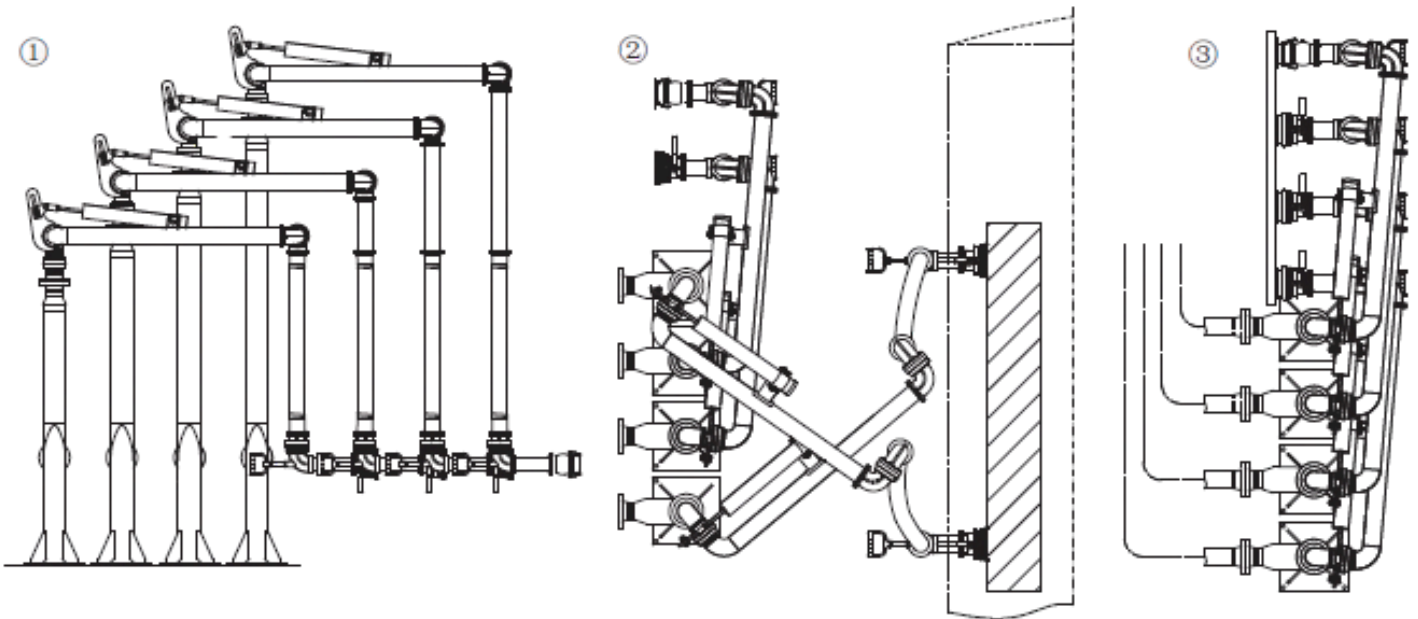
Bottom Loading Station

• Applications

For loading and unloading various oil products on road/railway tankers with bottom manifolds. Especially suitable for loading and unloading oil products on occasions with high environmental protection requirements.

• Main Features

- Directly installed on the ground foundation, compact structure, small footprint, low investment.
- Terrace layout design, cross operation available, non-interference of arms.
- Steel and aluminum alloy materials are used to reduce the weight and improve the ease of operation.
- Upper designed outboard arm increases the ground activity space and facilitates the operation of personnel.
- Submerged loading, reduce oil volatilisation.
- Vapor return connection, to achieve zero emissions on site.
- Dry coupler connection, to achieve no leakages on site.



① 4 arms in one station: 3 liquid arms and 1 vapor arm

② Cross connection

③ Stored position

GLOBAL PRESENCE

Supplying engineered solutions to clients in over 40 countries worldwide



Unit D , 300 Elgin Street , Pomona Precinct , Pomona AH, JHB, South Africa



+ 27 11 627 2501

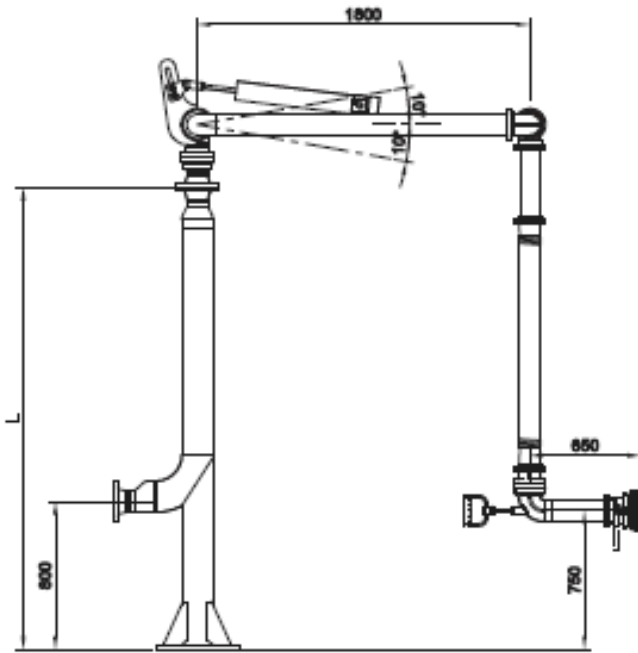


info@apgindustrial.co.za



www.apgindustrial.co.za





Standard Data

Nominal Diameter	DN100
Tanker Connection	API Coupler
Dimensions	See left diagram
MAWP	1.0 MPa

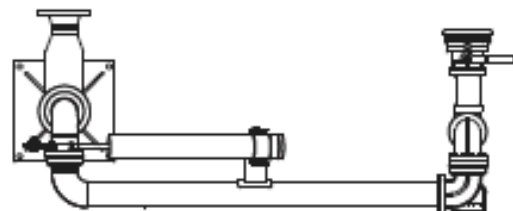
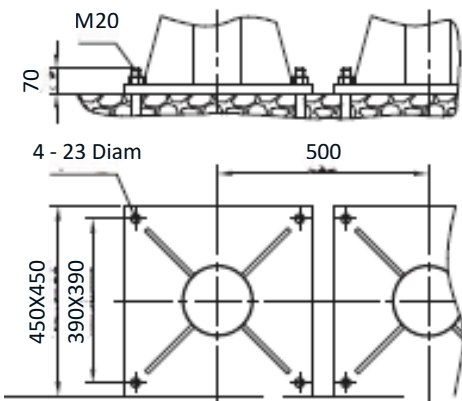
Typical Standpost Heights

L-1	L-2	L-3	L-4	L-5	L-6
2100	2500	2900	3300	3700	4100



Left Hand Design

Base Plate Dimensions



Right Hand Design

GLOBAL PRESENCE

Supplying engineered solutions to clients in over 40 countries worldwide



Unit D , 300 Elgin Street , Pomona Precinct , Pomona AH, JHB, South Africa



+ 27 11 627 2501



info@apgindustrial.co.za



www.apgindustrial.co.za



ENGINEERED SOLUTIONS. GLOBAL PERFORMANCE.

ProFlow delivers premium engineered solutions for the safe, efficient and reliable transfer of bulk fluids. Our systems are trusted across the world in the most demanding industrial environments.



ENGINEERED
SAFETY



RELIABLE
PERFORMANCE



GLOBAL
EXPERIENCE



CUSTOMER
FOCUSED



LIFETIME
SUPPORT

APG

INDUSTRIAL

ProFlow is a brand of
APG Industrial
A leading South
African provider of
Industrial solutions

APG INDUSTRIAL



Head Office:
Kempton Park,
Johannesburg,
South Africa.



011 627 2500



Info@apgindustrial.co.za



www.apgindustrial.co.za



GLOBAL PRESENCE

Supplying engineered solutions to clients in over 40 countries worldwide.



SCAN TO VISIT
[PROFLOW.COM](https://www.proflow.com)

QUALITY
MANAGEMENT
ISO 9001



ENVIRONMENT
MANAGEMENT
ISO 14001



SAFETY
MANAGEMENT
ISO 45001



DISCLAIMER

Product specifications and information in this catalogue are subject to change without notice. For the most up to date information, please contact ProFlow.

FOLLOW US





AM61M MARINE LOADING ARM

Manual operation, double counterweights and self-support design, with features of easy operation, small dead weight, space occupation and dead weight.

Normally less than 8", applicable for inland river jetty and other small jetty.



SAFE & RELIABLE



EASY OPERATION



LOW DEAD WEIGHT



PRECISE MOVEMENT



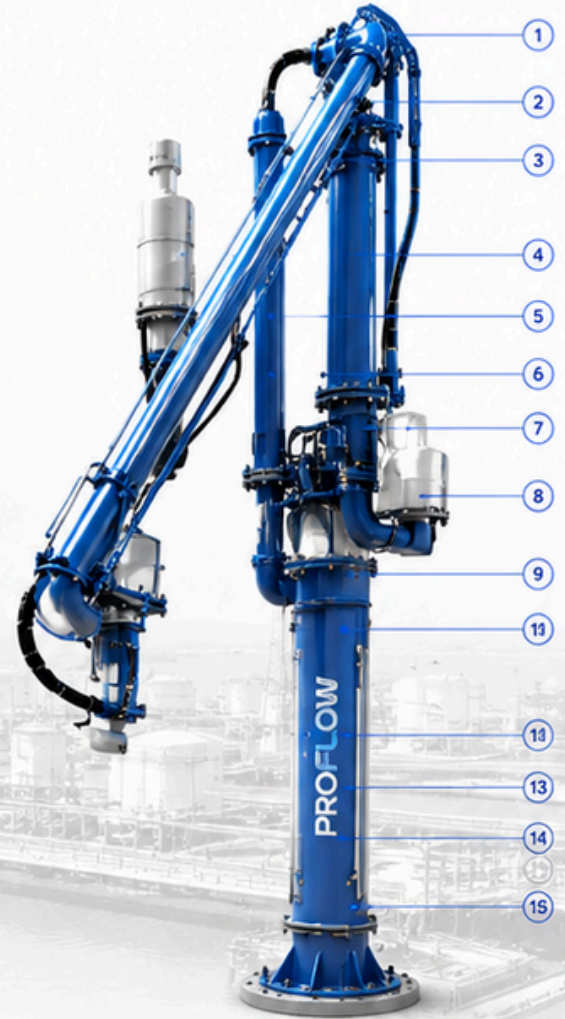
LOW MAINTENANCE

MAIN DATA

ITEM	DATA
Nominal Diameter	DN80 – DN600 (3" – 24")
Design Pressure	-0.06 ~ 10 MPa
Design Temperature	-196 ~ 250 °C
Pipeline Material	CS, SS, LTCS, Lined or Sprayed with Plastics
Applicable Products	Oil Products, Liquefied Gases, Chemicals, Powders
Operating Mode	Manual / Electro-hydraulic

MODEL OPTIONS

MODEL	OPERATION	COUNTERWEIGHT	SUPPORT	FEATURES
AM61M	Manual	Double	Self-support	Easy operation, small dead weight and space occupation.
AM63M	Manual	Rotary	Separate-support	Easy operation and seal change, less load on pipelines. Range alarm system optional.
AM63H	Electro-hydraulic	Rotary	Separate-support	Easy operation and seal change, ERC and QCDC optional.
AM64H	Electro-hydraulic	Rotary	Separate-support	With vapor return line, ERC and QCDC optional.



TYPICAL STRUCTURE

- | | | | |
|---|---------------------------------|---|------------------------|
| ① | Outboard Arm Counterweight | ⑨ | Drain Nozzle |
| ② | Outboard Arm Counterweight Beam | ⑩ | Base Plate |
| ③ | Apex Swivel Joint | ⑪ | Riser |
| ④ | Inboard Arm | ⑫ | Manual QCDC |
| ⑤ | Inboard Arm Counterweight Beam | ⑬ | Triple Swivel Assembly |
| ⑥ | Locking Device | ⑭ | Vacuum Breaker |
| ⑦ | Counterweight | ⑮ | Outboard Arm |
| ⑧ | Inlet Flange | | |

GLOBAL PRESENCE

Supplying engineered solutions to clients in over 40 countries worldwide



Unit D , 300 Elgin Street , Pomona Precinct , Pomona AH, JHB, South Africa



+ 27 11 627 2501



info@apgindustrial.co.za



www.apgindustrial.co.za

